

1

2

3

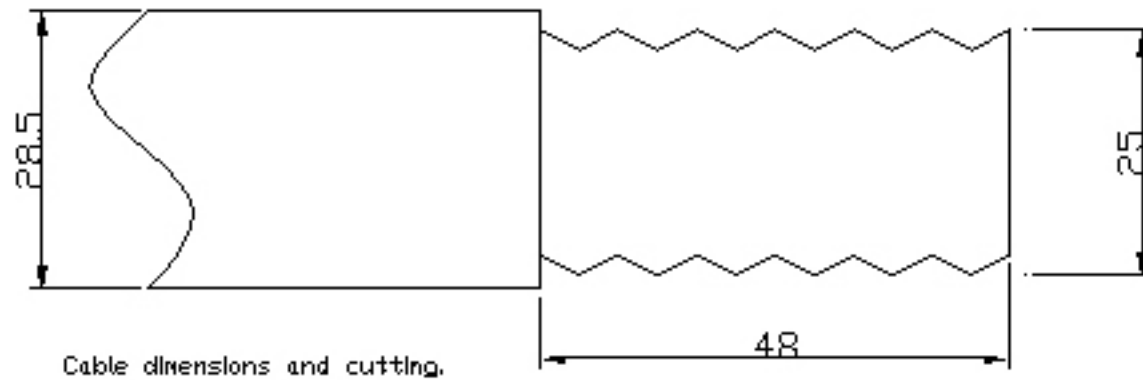
4

5

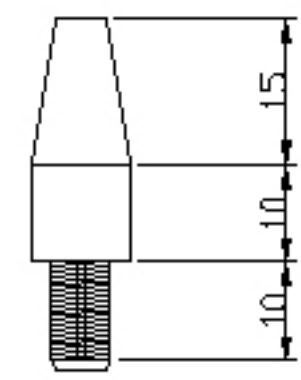
6

A

A



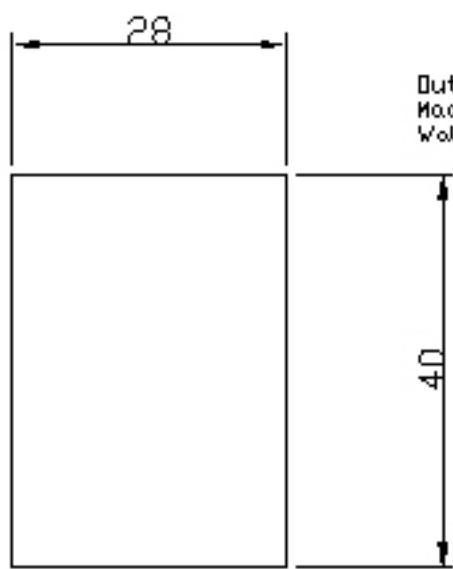
Cable dimensions and cutting.



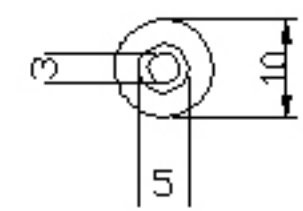
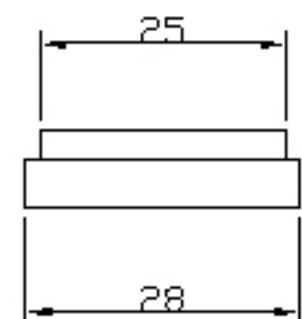
Centre pin interface.  
Made from brass stock.  
Slotted at the lower end  
to allow spring action.  
The top hole for Type N  
centre pin shall be 3.2 mm.  
The thread at the lower  
part is made with the  
lathe and is a very fine  
pitch thread.

B

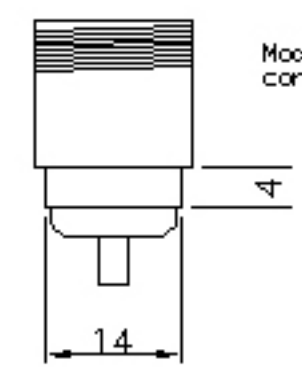
B



Outer cable shield extension.  
Made from brass tube.  
Wall thickness 10 mm

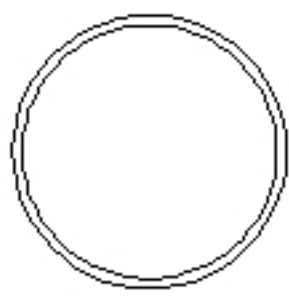


Modified Type N (F)  
connector.

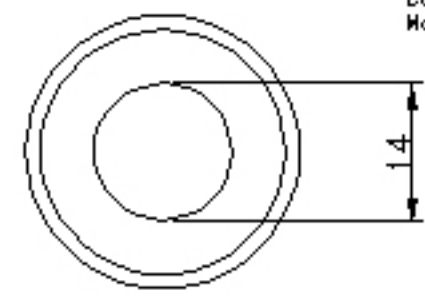


C

C



Cable interface end cap.  
Made from brass stock.



D

D

				SM6FHZ	
				2006-10-10, Rev PA1	
				Type N (F) connector interface for 7/8" cable.	

1

2

3

4

5

6