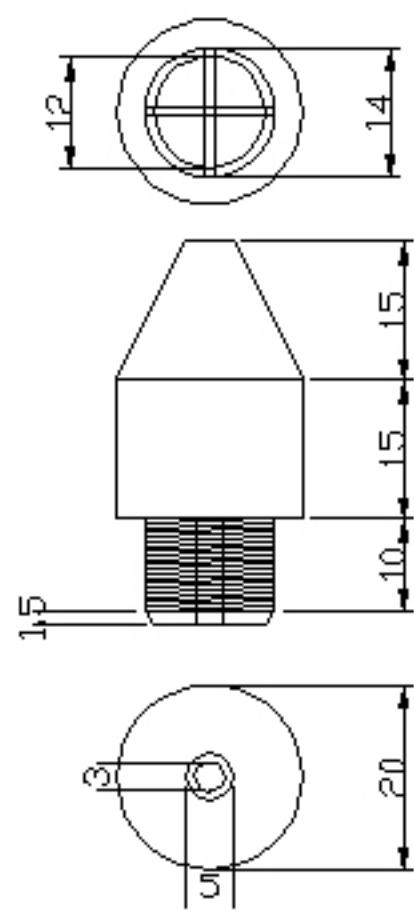
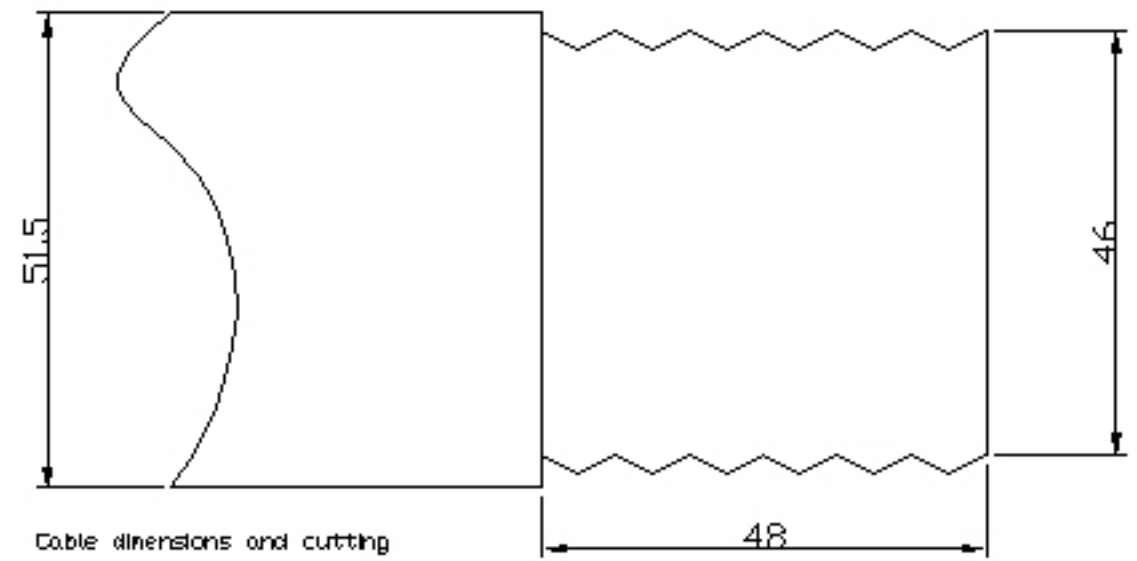


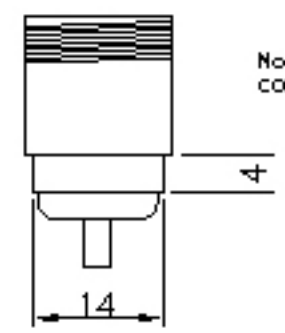
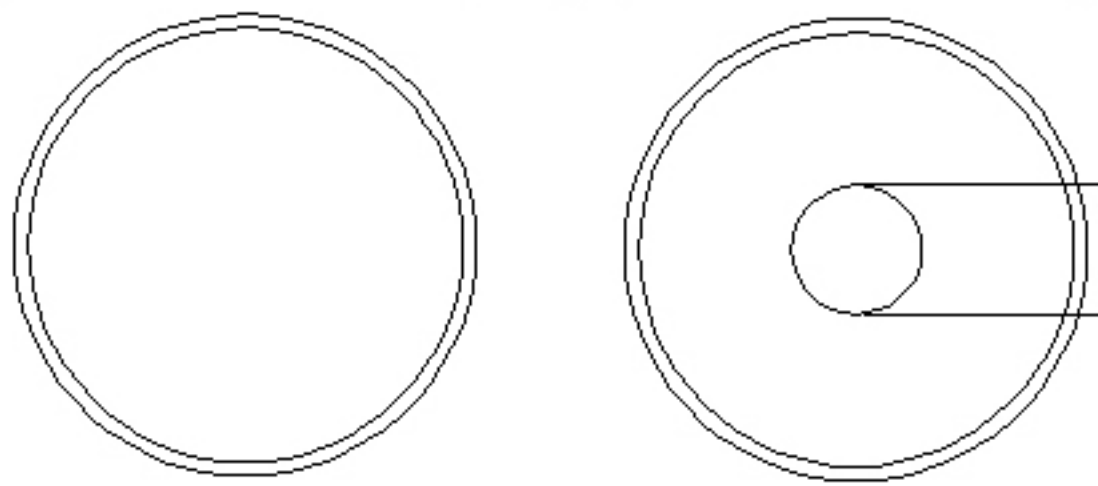
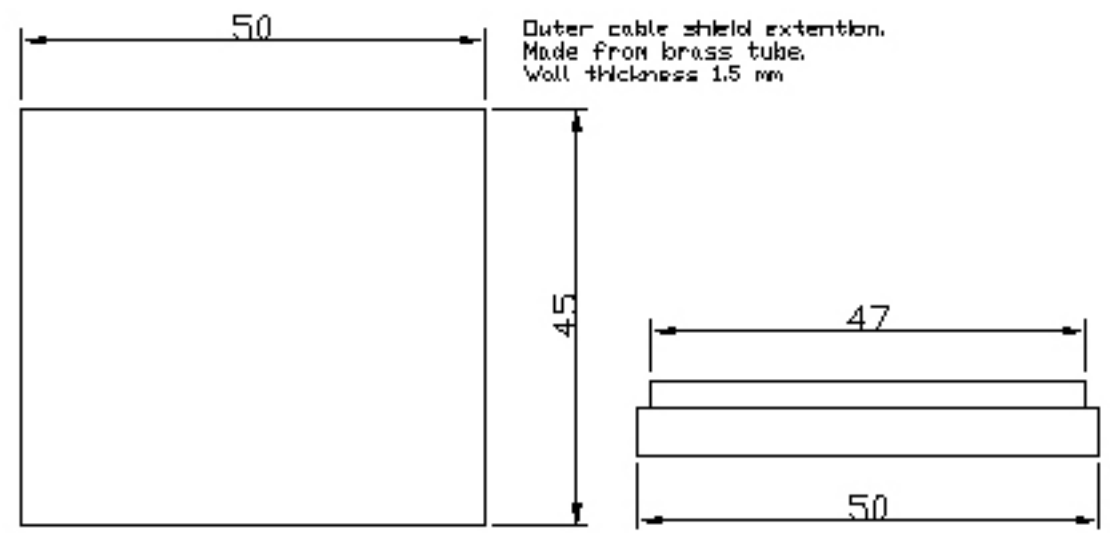
1                      2                      3                      4                      5                      6

A  
B  
C  
D

A  
B  
C  
D



Centre pin interface  
 Made from brass stock  
 Slotted at the lower end  
 to allow spring action  
 The top hole for Type N  
 centre pin shall be 32 mm.  
 The thread at the lower  
 part is made with the  
 lathe and is a very fine  
 pitch thread.  
 The diameter of the lower  
 part is 14.35 mm to get  
 the correct fastening  
 tension.



				SM6FHZ		2005-10-16, Rev PA1	
				Type N (F) connector interface		for 1 5/8" cable	

1                      2                      3                      4                      5                      6